

**GCLAD
EXPO**

GLOBAL CLADDING SOLUTIONS EXPO

23 – 25 October 2026

CONCURRENT SHOW

**GFLOOR
EXPO**



Organizer

HITEX

AceUrban Group



www.gcladexpo.in

THE GCLAD PLATFORM

The Global Cladding Solutions Expo (GCLAD Expo) makes its debut as India's first exhibition exclusively dedicated to cladding, façade systems, and building envelope technologies.

The inaugural edition of GCLAD Expo will be held concurrently with the 2nd Edition of GFLOOR Expo, creating a powerful, complementary platform that addresses two critical specification categories in every construction project—flooring and building exteriors.

As India experiences accelerated growth across commercial real estate, industrial developments, infrastructure upgrades, data centres, IT parks, healthcare facilities, and high-rise construction, demand for advanced façade and cladding solutions has reached unprecedented levels.



GCLAD Expo brings together the entire façade ecosystem under one roof:

- Manufacturers & material suppliers
- System providers & technology innovators
- Architects & façade consultants
- EPC contractors & builders
- Project specifiers & decision makers

The expo will showcase:

- Advanced cladding materials & façade systems
- High-performance building envelope solutions
- Roofing, insulation, fire protection & weatherproofing
- Digital & BIM-enabled façade design tools
- Sustainable, smart & net zero-ready technologies

By running alongside GFLOOR Expo, GCLAD benefits from shared footfall, broader project representation, and cross-category decision-making, while maintaining a clear and focused identity for the cladding and façade sector.

WHY HYDERABAD

Hyderabad continues to reinforce its position as one of India's fastest-growing hubs for real estate, commercial complexes, industrial parks, logistics corridors, and technology-driven developments; making it a natural home for the inaugural GCLAD Expo, just as it is for GFLOOR.

With millions of sq.ft. of façade-intensive commercial and residential developments underway—including IT parks, data centres, pharma campuses, logistics hubs, and high-rise projects; the city presents a high-demand market for modern cladding, glazing, roofing, and exterior envelope solutions.

Hyderabad's strategic location, excellent connectivity, thriving construction industry, and business-friendly policies create the perfect environment for exhibitors to interact with:

- Architects & façade consultants
- Developers & builders
- Industrial project planners Government & infrastructure agencies
- High-value decision-makers from across South & Central India

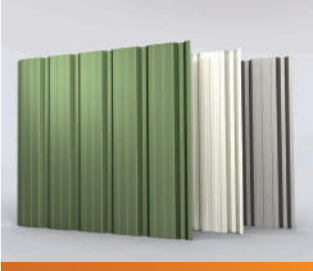
Just as GFLOOR leverages the nation's massive flooring demand, GCLAD Expo utilizes the city as a gateway to India's next wave of façade and exterior infrastructure.



ABOUT THE ORGANISER

As organisers of various trade expos, Hyderabad International Trade Expositions Limited (HITEX) aims to provide a platform for businesses, professionals, and industry experts to come together, showcase their products, services, solutions, and foster collaboration. The company's commitment to create a conducive environment for networking, knowledge exchange, and business growth contributes to the success of all the events it organises. With over two decades of experience in organising high-impact trade shows and business expos, HITEX has established itself as a trusted name in delivering professionally managed platforms that drive industry engagement, innovation, and long-term business growth.

EXHIBITOR PROFILE



Metal Cladding & Architectural Façades:

Aluminium, steel, zinc & copper cladding; ACP, perforated & honeycomb panels; FR/A2-grade systems; corrugated sheets; rainscreen & ventilated façades; custom architectural metal façades.



Glass Facades, Glazing & Curtain Walls:

Structural & unitized curtain walls; point-fixed & spider glazing; IGUs; Low-E & solar-control glass; skylights, canopies & glass roofing; façade engineering services.



Fenestration Systems (Windows & Doors):

Aluminium, uPVC & steel windows; sliding, casement, tilt-turn & lift-slide systems; thermal & acoustic solutions; fire-rated & security doors; smart/automatic systems; skylights, louvers, vents; hardware & sealing accessories.



Stone, Ceramic & Composite Cladding:

Natural stone; large-format ceramic & porcelain slabs; sintered stone; cement fibre boards; terrazzo panels; anchoring & fixing systems.



Wooden, WPC & Synthetic Cladding:

Natural & engineered wood; thermally modified timber; WPC panels; bamboo & eco-wood; uPVC & polymer-based exterior boards.



Roofing Systems & Building Envelopes:

Metal roofing; shingles, tiles & slate; polycarbonate & FRP sheets; tensile structures; green & cool roofs; roof insulation, waterproofing & drainage systems.



Insulation, Weatherproofing & Fire Protection:

Thermal & acoustic insulation; vapour barriers; waterproofing membranes; fireproofing systems; heat-reflective & solar-protective coatings.

Fixing Systems, Sub-Structures & Hardware:

Aluminium/steel subframes; brackets & anchors; mechanical fixings; expansion joints; gaskets, EPDM seals; structural glazing sealants.



Machinery, Tools & Installation Equipment:

CNC & ACP processing machines; cutting, bending & fabrication equipment; glass lifting tools; fenestration machinery; rope-access systems; BMUs; handling & safety equipment.



Surface Treatments, Coatings & Finishes:

Powder & PVDF coatings; anodising; anti-graffiti & anti-corrosion coatings; self-cleaning & hydrophobic finishes; exterior architectural paints.



Raw Materials, Components & Accessories:

Aluminium, steel, zinc & copper materials; glass interlayers; adhesives & sealants; hardware profiles; insulation materials, fillers & polymers.



Access, Scaffolding & Safety Systems:

Scaffolding & temporary access solutions rope-access solutions; BMUs; fall-arrest systems; PPE & work-at-height safety equipment.



Façade Cleaning, Maintenance & Retrofit:

Robotic & manual cleaning systems; restoration chemicals; protective treatments; AMC providers; retrofit & refurbishment services.



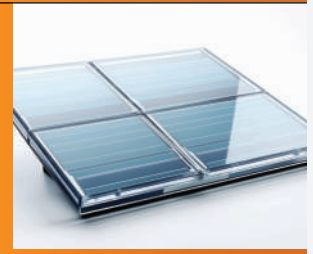
Sustainable & Net-Zero Cladding Systems:

Recycled & low-carbon materials; solar façades & BIPV; energy-efficient envelope systems; green-certified products; circular construction solutions.



Next-Generation & Smart Façade Technologies:

Smart & IoT-enabled façades; kinetic & adaptive systems; automated shading; parametric design; modular façade units; transparent solar glass.



WHY EXHIBIT

- Strong visibility across architects, developers, EPC firms, and contractors
- Opportunities to launch new products and demonstrate façade innovations
- High-quality networking with industry buyers, influencers, and project heads
- Branding through integrated campaigns, press exposure, and digital promotions
- Access to fast-growing demand across commercial, industrial, hospitality, healthcare, and institutional sectors
- Ideal platform to strengthen market presence, build partnerships, and capture upcoming project opportunities in India's building exterior ecosystem

VISITOR PROFILE

- Architects, façade consultants & design engineers
- Real estate developers, commercial builders & construction companies
- EPC contractors, industrial project planners & PEB companies
- Government infrastructure departments & urban development agencies
- Hospitality, healthcare, retail, IT park & mall developers
- Roofing, cladding & glazing contractors
- Material distributors, dealers & channel partners
- Facility managers, maintenance firms & building care specialists
- Investors, procurement heads & project management consultants

WHY VISIT

- The proven traction and footfall of GFLOOR Expo (5,000+ B2B visitors in its inaugural edition)
- Shared infrastructure, marketing bandwidth, and industry outreach
- A combined platform addressing both flooring and façade technologies-two key purchase categories in every construction project
- Opportunity to evaluate cladding, façade, building envelope, and flooring solutions in one integrated environment
- Direct interaction with manufacturers, system providers, and technical experts across multiple building material segments
- Exposure to new product launches, innovations, and emerging technologies
- Networking with architects, consultants, developers, EPC contractors, contractors, and project specifiers across interior and exterior building systems

PARTICIPATION CHARGES

SCHEME	Cost per Sqm*	
	Domestic in ₹	International in USD \$
Shell (Minimum Size – 9 sqm)	10,000	300
Raw Space / Bare Space (Minimum Size – 18 sqm)	9,000	250

- 18% GST will be applicable in addition

Vantage charges as applicable

- 20% Extra on a 4-side open stall (Island)
- 15% Extra on a 3-side open stall
- 10% Extra on a 2-side open stall

Early Bird Discount as applicable

- 15% for confirmations received on or before 31st March 2026
- 10% for confirmations received on or before 30th June 2026

SPONSORSHIP OPPORTUNITIES

- Title Sponsor
- Platinum Sponsor
- Gold Sponsor
- Lanyard Sponsor
- Co-Sponsor
- Diamond Sponsor
- Silver Sponsor
- Visitor Registration Partner

SUPPORTED BY:



MEDIA PARTNER:



HYDERABAD INTERNATIONAL TRADE EXPOSITIONS LIMITED

Trade Fair Office Building, HITEX Exhibition Centre, Izzat Nagar,
Kondapur PO, Hyderabad – 500 084, INDIA

FOR STALL BOOKINGS

VINOTH SASIDHARAN

+91-91212 11159

sv@hitex.co.in

P V VASANTH REDDY

+91-91212 11162

pvvr@hitex.co.in

ABDUL SAMAD

+91-91354 56906

sas@hitex.co.in